

# **Michigan's Medicaid "Healthy Kids Dental" program**

**Stephen A. Eklund, DDS, DrPH, MHSA**

Professor emeritus, University of Michigan School of  
Public Health

Consultant to Delta Dental of Michigan, Ohio and  
Indiana

April 28, 2008

1

- Nationally, children on Medicaid are far less likely than their privately-insured counterparts to:
  - utilize dental services
  - have a regular source of dental care or a "dental home"
  - receive comprehensive follow-up if screened

2

## ***Healthy Kids Dental Program***

- Administered by the Delta Dental Plan of Michigan
- Dentists paid usual Delta fees, same as for any other Delta-insured child
- Child may use any participating provider
- Program eligibility based on child's county of residence, not location of the dentist
- Standard claims administration (same as for all other Delta patients)
- 100% payment (no patient co-payments)
- No annual maximum

3

## **Michigan Healthy Kids Dental**

- Began on May 1, 2000 in **22** of Michigan's 83 counties
- Expanded to **37** counties on October 1, 2000
- Expanded to **59** counties on May 1, 2006
- Will expand to **61** counties on July 1, 2008

4

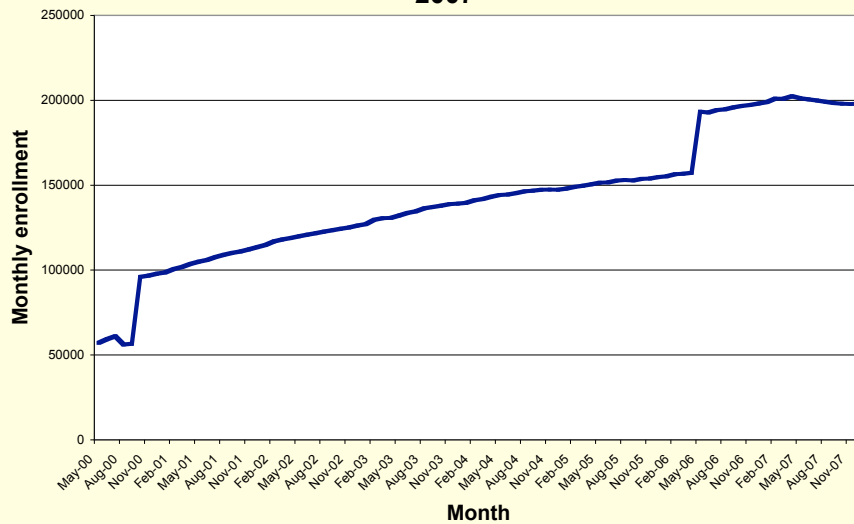


# Michigan Healthy Kids Dental

- Enrollment patterns
- Access patterns
- Participating dentists
- Dental home
- Travel distance
- Utilization and cost

7

**HKD enrollment by month, May 2000 through December 2007**



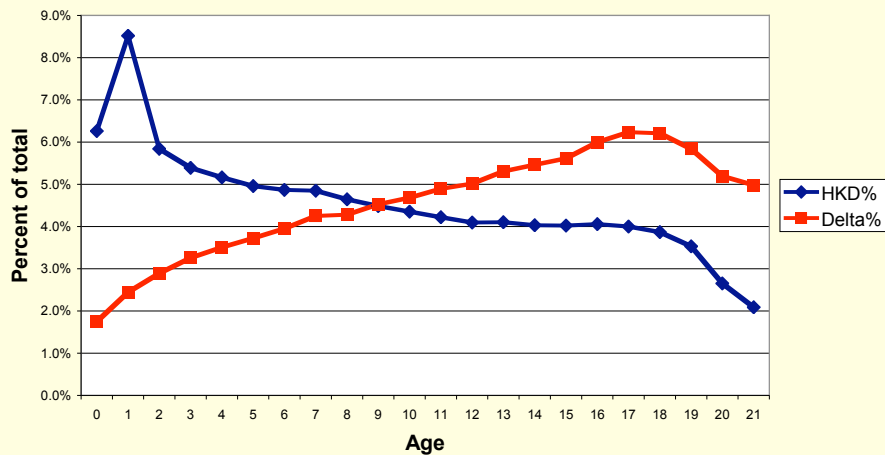
8

# Enrollment and Access

Year	Any enrollment		12 month enrollment		1 to 11 month	
	Enrolled	Users	Enrolled	Users	Enrolled	Users
2001	162,678	48,714 (29.9%)	55,536	27,226 (49.0)	107,142	21,448 (20.0)
2002	178,519	57,032 (31.9%)	66,725	33,643 (50.4)	111,794	23,389 (20.9)
2003	192,327	63,856 (33.2%)	76,673	39,437 (51.4)	115,654	24,419 (21.1)
2004	204,664	68,058 (33.2)	84,524	43,443 (51.4)	120,140	24,615 (20.5)
2005	213,447	74,027 (34.7)	90,003	47,831 (51.4)	123,474	26,196 (21.2)
2006	266,593	93,148 (35.0)	94,654	50,906 (53.1)	171,939	42,242 (24.6)
2007	273,850	101,637 (37.1)	120,974	66,718 (55.2)	152,876	34,919 (22.8)

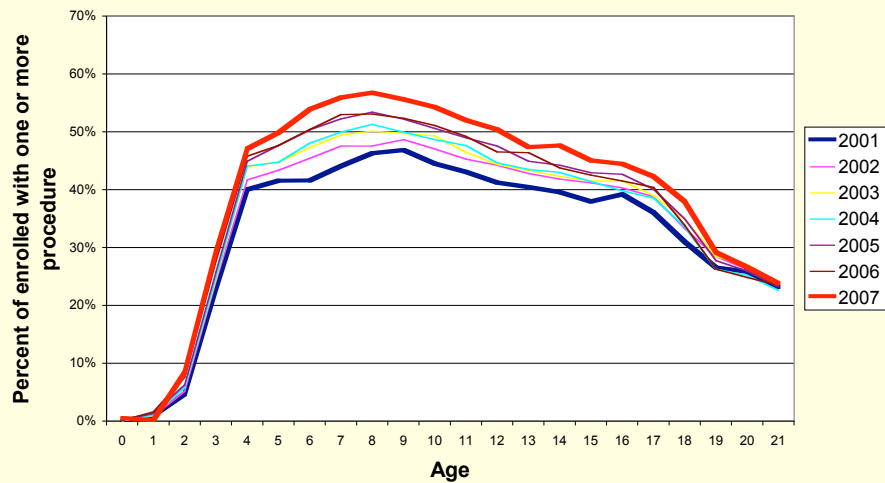
9

**Relative enrollment percent by age for Delta commercial groups and HKD in the 59 HKD counties as of 2007**



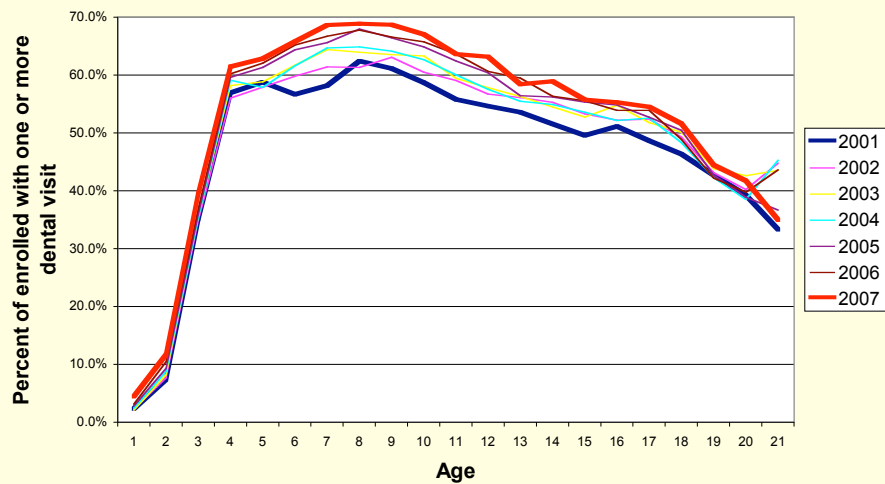
10

**Michigan Healthy Kids Dental utilization of dental care, any enrollment in calendar year, by age**



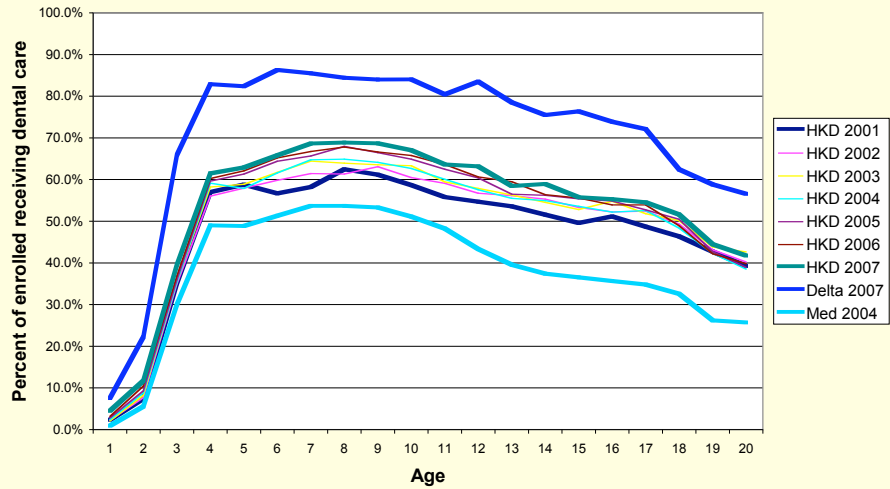
11

**Michigan Healthy Kids Dental utilization of dental care, 12 month enrollment in calendar year, by age**



12

**HKD, Medicaid, and Delta private utilization of dental care, 12 month enrollment in calendar year, by age**



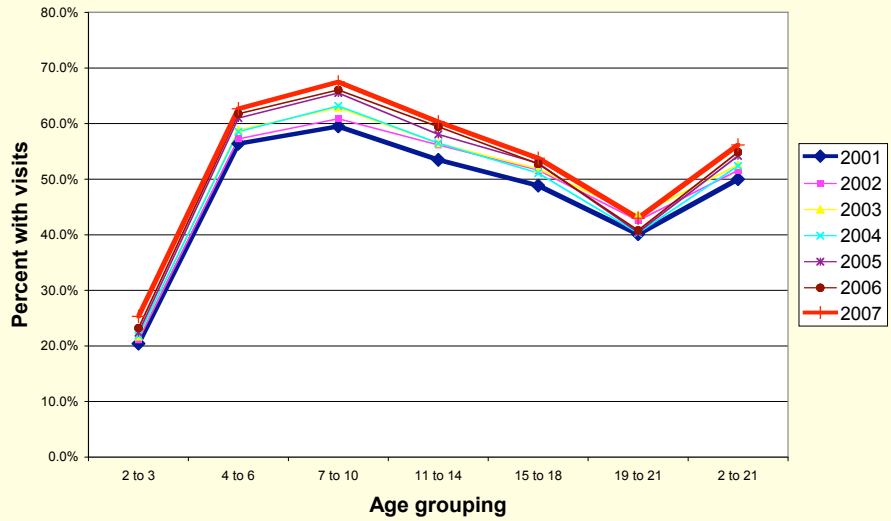
13

**HEDIS Annual Dental Visit for HKD**

Age	2001	2002	2003	2004	2005	2006	2007
2 to 3	20.4%	21.1%	21.7%	21.9%	22.4%	23.2%	25.3%
4 to 6	56.4%	57.2%	58.8%	58.5%	61.0%	61.8%	62.6%
7 to 10	59.5%	60.9%	62.9%	63.2%	65.5%	66.0%	67.5%
11 to 14	53.5%	56.2%	56.4%	56.5%	58.0%	59.4%	60.3%
15 to 18	48.9%	51.6%	51.8%	51.1%	52.9%	52.7%	53.8%
19 to 21	40.1%	42.6%	43.5%	40.3%	40.4%	40.8%	43.0%
2 to 21	50.0%	51.6%	52.5%	52.4%	54.2%	54.8%	56.2%

14

### HEDIS Annual Dental Visit for HKD



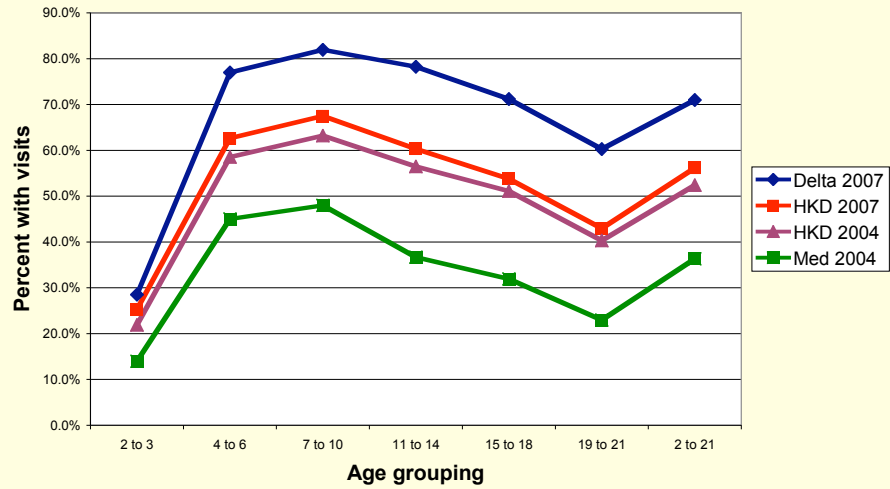
15

### HEDIS Annual Dental Visit for Delta, HKD, and Medicaid

Age	Delta 2007	HKD 2007	HKD2004	Med 2004
2 to 3	28.5	25.3	21.9	14.0
4 to 6	77.0	62.6	58.5	45.0
7 to 10	82.0	67.5	63.2	48.0
11 to 14	78.3	60.3	56.5	36.7
15 to 18	71.2	53.8	51.1	31.9
19 to 21	60.3	43.0	40.3	23.0
2 to 21	71.0	56.2	52.4	36.3

16

### HEDIS annual visit for HKD, Medicaid, and Delta commercial



17

### Participating dentists

Number of dentists and number of children receiving treatment

Year	Dentists	Children treated (Children per dentist)	Child-dentist combinations (Children per dentist)
2001	1544	48,714 (31.6)	56,971 (36.7)
2002	1624	57,032 (35.1)	66,354 (40.9)
2003	1715	63,856 (37.2)	74,307 (43.3)
2004	1773	68,058 (38.4)	79,599 (44.9)
2005	1926	74,027 (38.4)	88,951 (46.2)
2006	2255	93,148 (41.3)	109,440 (48.5)
2007	2243	101,637 (45.3)	122,841 (54.8)

18

## Travel Distance

Year	Total HKD providers	Average (and Median) Delta travel distance in miles	Average (and Median) HKD travel distance in miles	29 county Delta gp and pedo providers	29 county HKD gp and pedo providers
2001	1544	13.7 (7.6)	11.0 (7.5)	461	410 (88.9%)
2002	1624	13.5 (7.9)	11.4 (7.6)	471	407 (86.4%)
2003	1715	13.2 (7.9)	11.2 (7.6)	483	416 (86.1%)
2004	1773	13.7 (8.1)	11.3 (7.6)	493	433 (87.8%)
2005	1926	13.3 (8.0)	11.1 (7.6)	493	447 (90.7%)

19

## Dental Home

Year	Number of HKD children with two or more preventive visits per year	Percent of HKD children with two or more preventive visits per year	Percent of Delta children with two or more preventive visits per year	Percent of HKD 12-month enrolled children with two or more visits per year
2001	9,202	19.9	38.4	26.9
2002	12,138	22.8	38.0	29.7
2003	14,729	24.4	38.3	31.3
2004	16,365	25.4	38.7	32.0
2005	17,788	24.8	37.2	30.9

20

## Procedures per user

Year	D&P	Resto	Endo	Perio	Pros	OSurg	Adj	Total
2001	4.24	1.51	0.09	0.01	0.00	0.31	0.03	6.19
2002	4.31	1.52	0.10	0.01	0.00	0.32	0.03	6.29
2003	4.41	1.50	0.10	0.01	0.00	0.31	0.03	6.36
2004	4.44	1.46	0.10	0.00	0.00	0.31	0.04	6.34
2005	4.53	1.45	0.09	0.00	0.00	0.32	0.04	6.45
2006	4.42	1.33	0.09	0.01	0.00	0.21	0.02	6.08
2007	4.58	1.35	0.09	0.01	0.00	0.22	0.02	6.27

21

## Percent of total cost by major procedure code groupings

Year	D&P	Resto	Endo	Perio	Pros	OSurg	Adj
2001	41.7	38.5	7.0	0.4	0.3	10.8	1.3
2002	40.5	39.3	7.3	0.4	0.4	10.9	1.3
2003	41.4	38.8	7.2	.03	0.3	10.8	1.3
2004	42.8	36.6	7.3	0.1	0.3	11.3	1.5
2005	42.2	36.1	7.1	0.1	0.3	12.4	1.8
2006	47.4	38.1	6.8	0.2	0.2	6.5	0.8
2007	47.4	37.6	6.8	0.3	0.3	6.8	0.9

22

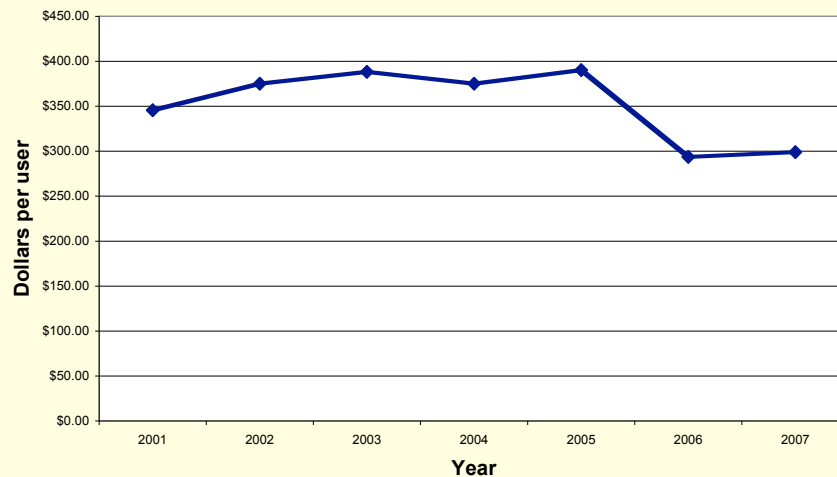
## Paid\* per user

Year	D&P	Resto	Endo	Perio	Pros	OSurg	Adj	Total
2001	143.98	133.15	24.31	1.48	1.21	37.20	4.37	345.68
2002	151.85	147.42	27.25	1.56	1.38	40.83	4.79	375.08
2003	160.63	150.58	27.99	1.06	1.00	41.92	5.07	388.26
2004	160.50	137.50	27.46	0.40	1.14	42.41	5.78	375.19
2005	164.71	140.99	27.52	0.47	1.06	48.50	7.08	390.32
2006	139.08	111.85	20.11	0.70	0.61	19.04	2.33	293.71
2007	141.74	112.35	20.30	0.79	0.75	20.24	2.77	298.94

\*All dollar amounts presented are adjusted for inflation using the 2007 All Item Consumer Price Index (CPI), and reported in 2007 dollars.

23

### HKD treatment cost per user of care, adjusted to 2007 dollars by All-Item CPI



24

## SUMMARY

- Access to dental care has continued to improve under HKD.
- The change to PPO fee levels does not appear to have slowed the increase in access to care.
- More children and an increasing proportion of children received dental services each year.
- The number of dentists providing care continues to increase.

25

## SUMMARY - continued

- The number of children treated per dentist continues to increase.
- Children continue to access needed services from local providers close to home.
- Many *HKD* children appear to have a dental home and to be entering regular recall patterns.

26